

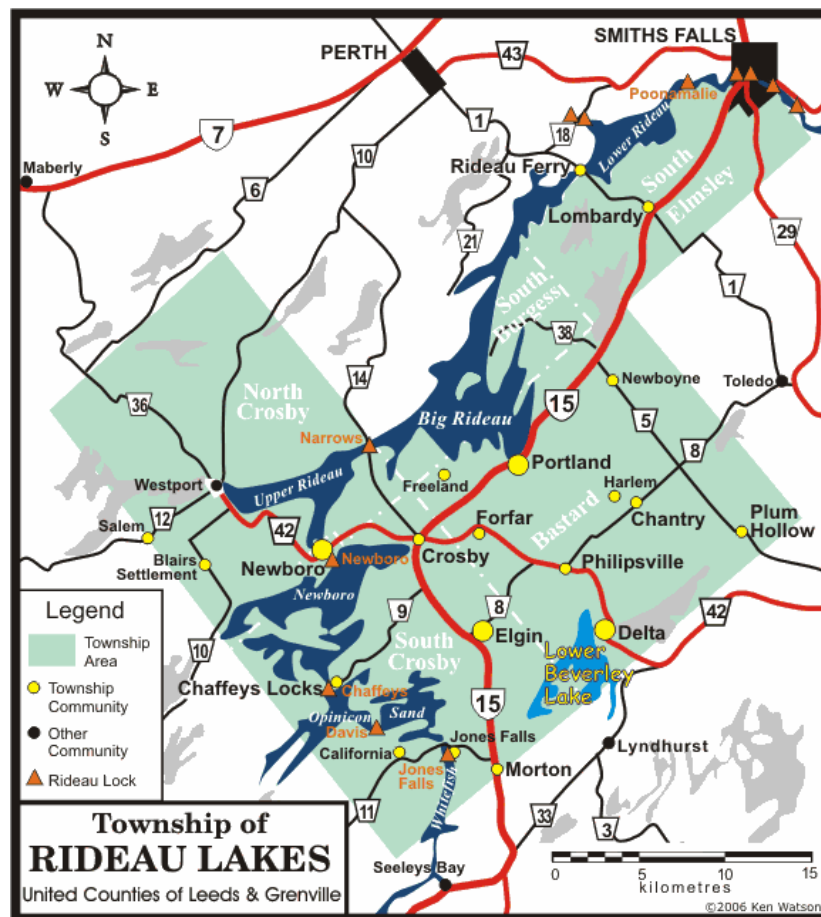
## Travelling to Delta from.....

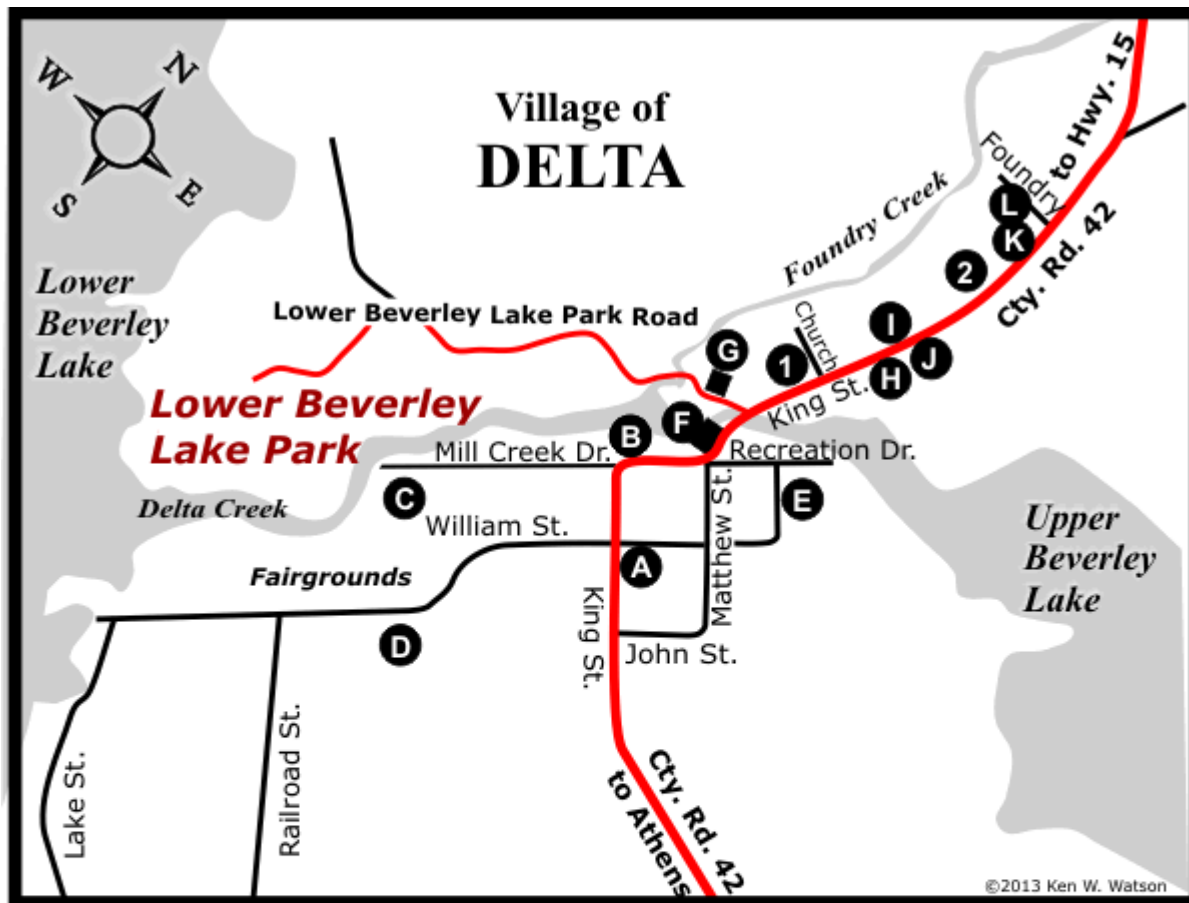
**Kingston**, take Highway 15 north to County Road 33 (exit for Lyndhurst) and follow it through Lyndhurst to County Road 42 and follow the signs to Delta.

**Montreal**, take Highway 401 to Brockville, follow County Road 29 north to County Road 42 and follow that west to Delta.

The **US Bridge at Lansdowne**, take County Road 3 north to Lyndhurst and then follow County Road 33 north to County Road 42 and follow the signs to Delta.

Ottawa, take Highway 417 to Carleton Place and then Highway 15 south to Smiths Falls. From Smiths Falls, follow Highway 15 south to Crosby and turn onto County Road 42 to Delta.





*Churches*

- |                         |                              |                             |
|-------------------------|------------------------------|-----------------------------|
| <b>1</b> United Church  | <b>D</b> Fairgrounds Parking | <b>J</b> LCBO (Liquor/Beer) |
| <b>2</b> Baptist Church | <b>E</b> Recreation Centre   | <b>K</b> Library            |

*Facilities & Services*

- |                            |                               |
|----------------------------|-------------------------------|
| <b>A</b> Legion Hall       | <b>G</b> Old Town Hall        |
| <b>B</b> Fire Hall Museum  | <b>H</b> Delta Country Market |
| <b>C</b> Delta Fairgrounds | <b>I</b> Post Office          |